

Mark your calendar for this year's...



# AUSTRALIAN OPEN

NSW GOLF CLUB ~ 3-6 DECEMBER 2009  
LA PEROUSE

*It doesn't get much better than this!*

In 2009 the Australian Open will be played at the breathtaking NSW Golf Club. Surrounded by National Park and located on the Botany Bay headland, NSW Golf Club boasts spectacular views over the course to the Pacific Ocean and is rated in the top 50 golf courses in the world.

See world-class golfing talent, Greg Norman, Geoff Ogilvy, Aaron Baddeley, Adam Scott, Mathew Goggin, Stuart Appleby and defending champion Tim Clark together with a host Australian and International talent battle it out for the most esteemed trophy in Australian golf, the Stonehaven Cup from 3 to 6 December 2009.

Experience the Australian Open in style by entertaining your guests in the prestigious Stonehaven Club overlooking the 18th Green and fairway or the Ocean Skybox located on the par 3, 6th hole, affording spectacular views of this signature hole and the Pacific Ocean. These combined facilities offer you and your guests the unique opportunity to see all action in style from two different locations.



2008 CHAMPION  
TIM CLARK

GREG NORMAN

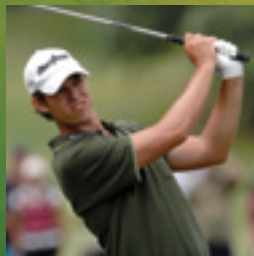
GEOFF OGILVY



STONEHAVEN CLUB



ADAM SCOTT



AARON BADDELEY



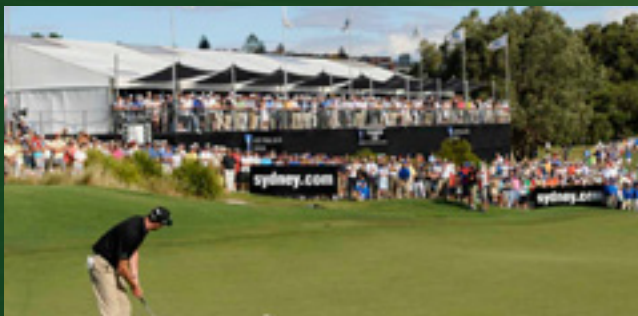
# AUSTRALIAN OPEN

# NSW GOLF CLUB ~ 3-6 DECEMBER 2009

LA PEROUSE

## Stonehaven Club

The spacious and luxuriously appointed *Stonehaven Club* is located right on the 18th Fairway affording spectacular views of both the fairway and green, capturing the excitement and action of the final hole. The ideal place to entertain your vip guests while networking with the many other corporates.



## Ocean Club Skybox

The magnificently appointed *Skybox* located on the 6th hole affords spectacular views of this signature hole par 3 and the spectacular rugged coastline of the Pacific Ocean.



## Full Corporate Package Includes:

- Access to the course and the *Stonehaven Club*.
- Full use of the *Stonehaven Club* from 10.00am to 7.00pm on Thursday/Friday and 10.00am to 6.00pm on Saturday/Sunday.
- Your own reserved table for eight people (extra possible) in the *Stonehaven Club* including floral centrepiece and your own company table signage.
- Morning tea upon arrival, buffet lunch served from 12pm to 2.30pm and afternoon tea with full table service in the *Stonehaven Club*.
- Six hour beverage service including premium beers, wine and softdrink from 11.30am to 5.30pm.
- Company acknowledgement in the Event Programme and welcome display board.
- Ten (10) general admission tickets.
- Complimentary programme, draw sheet and gift for each guest.
- Two corporate car park passes.

|              |                      |                    |
|--------------|----------------------|--------------------|
| <b>Cost:</b> | Thursday             | \$3,200            |
|              | Friday               | \$3,600            |
|              | Saturday             | \$3,600            |
|              | Sunday               | \$3,800            |
|              | Four (4) day package | \$13,000 (inc gst) |

**Book Now! 03 8420 5888**  
Strictly limited numbers available

## Ocean Skybox Package

Purchase individual tickets to this unique facility located on the famous 6th hole overlooking the Pacific Ocean.

The package includes:

- Entry to course and *Ocean Skybox* on any day of your choosing,
- Canapés served from 12noon to 2.00pm,
- Premium beer, wine and softdrinks served from 11.00am to 4.00pm on Thursday/Friday and from 11.00am to 3pm Saturday/Sunday

**Cost:** \$250 per person

(Maximum of 4 tickets per booking)

**For further details on these corporate hospitality packages, or to enquire about your own exclusive marquee, or pro-am contact:**

Jo De Jong

**Phone: 03 8420 5888**

TRP Sports

484 Swan Street, RICHMOND VIC 3121

jo@trpsports.com.au

**[www.australianopengolf.com.au](http://www.australianopengolf.com.au)**

