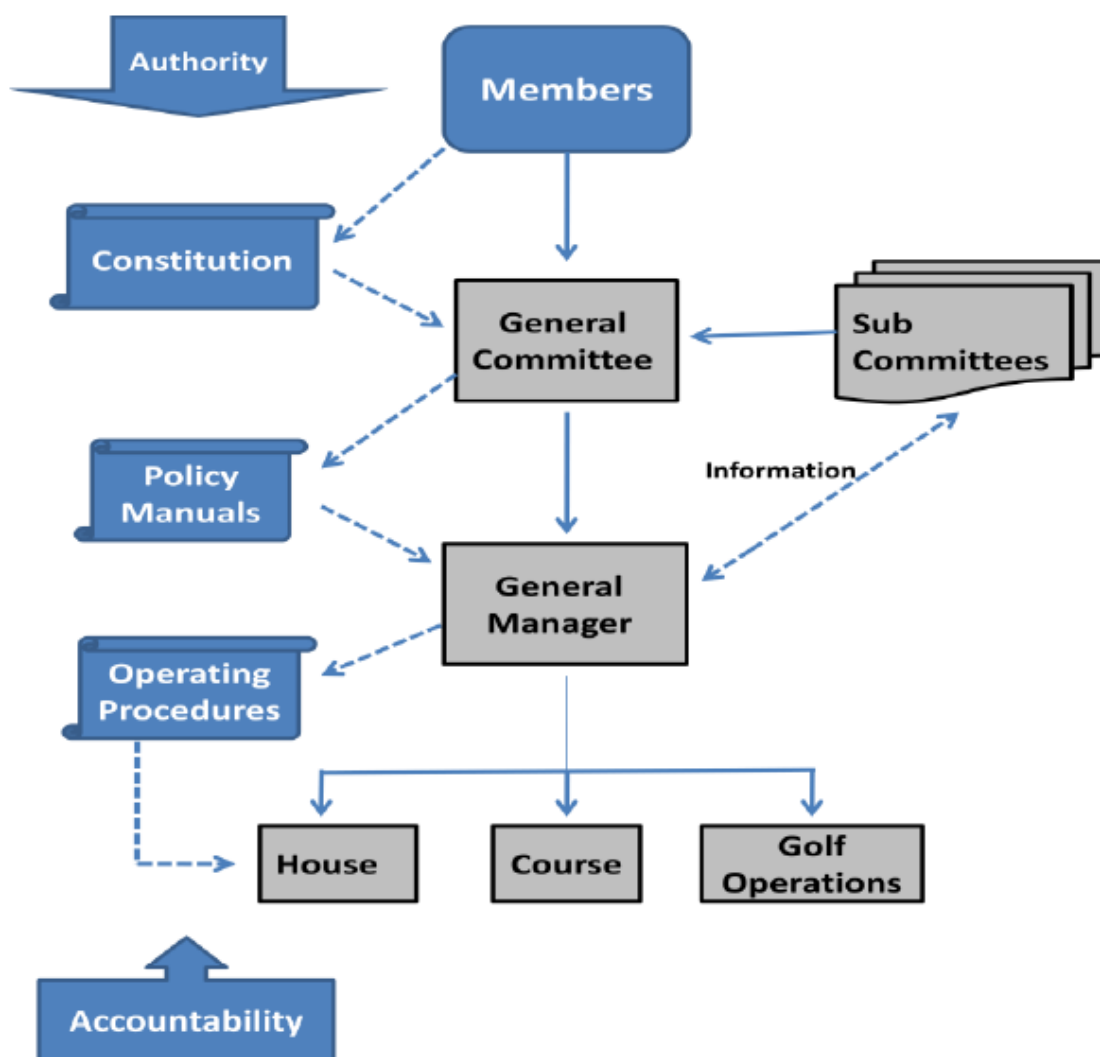




A Common Club Governance Model – Medium to Large Clubs

This model below has been adopted as modern day best practice. It gives clarity, stability and efficiency to the governance function.

Governance is the making and administration of policy. Policy is a course of action or directive from a person of higher authority.



On the left hand side we see different types of policy in blue. The constitution is policy determined by members, the policy manuals are policy determined by the board/committee and operating procedures are policy determined by the General Manager (if applicable) or volunteers.

Authority flows from the members to the board/committee within the confines of the constitution.

The board/committee, with the help of its sub-committees, develops committee policies to guide the General Manager. These committee policies represent the “voice of the board/committee” to the General Manager, the staff and the members.

In seeing to the implementation of these committee policies, the General Manager may delegate to department managers with the aid of operating procedures.

This model of governance traces the flow of authority from the club members to the service staff and accountability from the staff back to the members.