



2018 ROADSHOW SERIES

● GOLF OVERVIEW

PRESENTED BY

Graeme Phillipson – General Manager - Golf

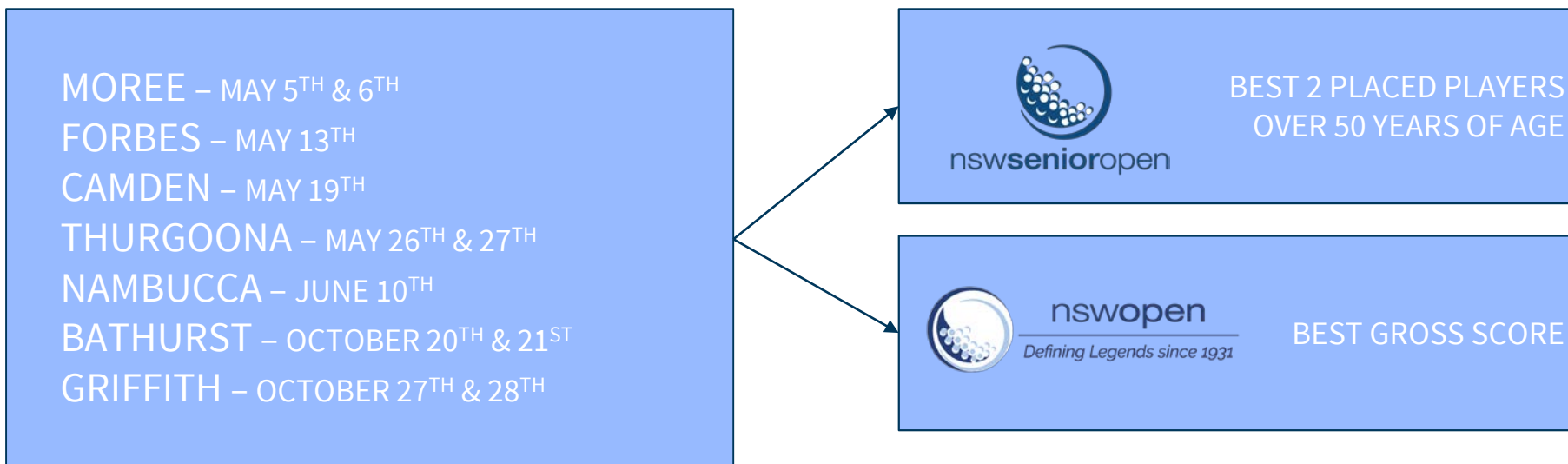
www.golfnsw.org





REGIONAL QUALIFYING OPPORTUNITIES

NSW OPEN & NSW SENIOR OPEN CHAMPIONSHIPS





JUNIOR PRO-AM OPPORTUNITY

NSW OPEN CHAMPIONSHIP





NSW SENIOR OPEN CHAMPIONSHIP

OCTOBER 26TH – 28TH AT THURGOONA COUNTRY CLUB RESORT





AUSTRALIAN LADIES CLASSIC - BONVILLE

BONVILLE GOLF RESORT





WOMEN'S NSW OPEN QUEANBEYAN GOLF CLUB





THE RULES OF GOLF

CHECKLIST FOR CLUBS – WILL BE RECEIVED IN JULY

- Local rules and Scorecard printing
- Send golfers to www.golfnsw.org to view major changes

COURSE MARKING

Areas the Committee May Mark as Penalty Areas



Areas of desert, jungle, lava rock, etc. (in addition to areas of water) may now be marked as red or yellow "penalty areas."

Elimination of Opposite Side Relief for Red Penalty Areas



Relief from a red penalty area no longer allowed on the opposite side from where the ball last entered the penalty area.

Expanded Use of Red-Marked Penalty Areas



Committees are given the discretion to mark any penalty area as red so that lateral relief is always allowed.

LOCAL RULES

Relief For an Embedded Ball



Relief allowed without penalty for an embedded ball anywhere (except in sand) in the "general area" (a new term for "through the green").

Use of Distance-Measuring Devices



The use of DMDs will be allowed unless a Local Rule has been adopted prohibiting their use.

CONSIDERATIONS

Maximum Score Form of Stroke Play



A new "Maximum Score" form of stroke play is recognized, where your score for a hole is capped at a max score.

Encouraging Prompt Pace of Play



It is recommended that you play "ready golf" and make each stroke in no more than 40 seconds.





THE RULES OF GOLF COMMUNICATING THE CHANGES – SEPTEMBER 2018

- Check the website
- Posters of major changes for Club noticeboards
- Small handout for golfers playing in January - detailing the major changes
- 3 versions of the Rules of Golf plus a “Rules in Brief” document

The Player's Edition of the Rules of Golf

Primary resource for players

- A shorter, more user-friendly version of the Rules of Golf, written for you, the player
- Includes explanatory images and diagrams
- Available digitally and as pocket-size print publication

The Rules of Golf

Primary resource for officials

- Full version covering all the playing Rules
- Includes explanatory images and diagrams
- Available digitally and as large-size print publication

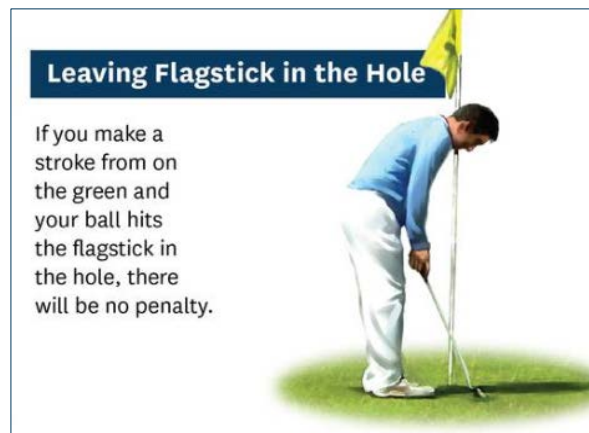
The Official Guide to the Rules of Golf

Supplementary resource for officials

- Replaces Decisions book and provides long-form guidance to assist with officiating and administration
- Includes the Rules of Golf, Interpretations, Committee Procedures, and Modified Rules of Golf for Players with Disabilities
- Available digitally and as large-size print publication



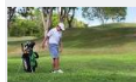
THE RULES OF GOLF THE CHANGES



THE RULES OF GOLF

THE CHANGES – VIDEOS AVAILABLE ONLINE FOR ALL CHANGES

Ball Moved During Search



No penalty for accidentally moving your ball during search.

Time For Search Before Ball is Lost



Your ball is lost if not found in three minutes (rather than the current 5 minutes).

No Penalty for Moving Ball on the Putting Green



No penalty for accidentally moving your ball or ball-marker on the putting green.

When to Replace a Ball That Moves on the Putting Green



After your ball has been lifted and replaced, you would always replace your ball on its original spot, even if it was blown by the wind or moved for no clear reason.

Standard for Deciding Why a Ball Moved



New standard to determine if you caused your ball to move.

Use of Clubs Damaged During Round



A club damaged during a round can continue to be used, even if you damaged it in anger.

THE RULES OF GOLF

THE CHANGES – VIDEOS AVAILABLE ONLINE FOR ALL CHANGES

Replacing Ball When Original Spot is Not Known



When the original location of your ball is not known, replace it on its estimated spot.

Caddie Lifting Ball on the Putting Green



Your caddie may lift and replace your ball on the putting green without your specific authorization to do so.

Ball in Motion Accidentally Deflected



No penalty if your ball in motion is accidentally deflected by you, your equipment, or your caddie.

Caddie Standing Behind a Player to Help Line the Player Up



A caddie is not allowed to stand on a line behind you while you are taking your stance and until your stroke is made.

Ball Accidentally Struck More Than Once During a Stroke



If your club accidentally strikes your ball more than once during a stroke, there will be no penalty and your ball will be played as it lies.

Adding Clubs to Replace a Club Damaged During Round



You will not be allowed to replace a damaged club during a round if you were responsible for the damage.



THE RULES OF GOLF

MAJOR CHANGES – THE EDUCATION OF GOLFERS

- Concentrate on dropping procedures
 - This is an area that players must get correct, or be penalised
- Other changes incur no penalty:
 - Leaving the flag in the hole
 - Grounding a club in a penalty area
 - Removing loose impediments in a bunker





THE RULES OF GOLF

A LOST BALL

LOST BALL





THE RULES OF GOLF



If the Local Rule is in effect, you can still take stroke-and-distance relief, but you will now have the following additional option that comes with a penalty of two strokes:

A DETERMINE SPOT where your ball went out of bounds (left diagram) or is likely to be lost (right diagram).

B FIND NEAREST FAIRWAY EDGE no closer to the hole.

C DROP YOUR BALL IN SHADED AREA as defined on one side by a line from the hole through point A and on the other side by a line from the hole through point B, and not nearer the hole. The relief area is extended on both sides by two club-lengths.

THE RULES OF GOLF

Rule 16

RULE 16 Relief from Abnormal Course Conditions (Including Immovable Obstructions), Dangerous Animal Condition, Embedded Ball

Purpose of Rule:

Rule 16 covers when and how the player may take free relief by playing a ball from a different place, such as when there is interference by an abnormal course condition or a dangerous animal condition.

- These conditions are not treated as part of the challenge of playing the course, and free relief is generally allowed except in a penalty area.
- The player normally takes relief by dropping a ball in a relief area based on the nearest point of complete relief.

This Rule also covers free relief when a player's ball is embedded in its own pitch mark in the general area.

16.1 Abnormal Course Conditions (Including Immovable Obstructions)

This Rule covers free relief that is allowed from interference by *animal holes*, *ground under repair*, *immovable obstructions* or *temporary water*:

- These are collectively called *abnormal course conditions*, but each has a separate Definition.
- This Rule does not give relief from *movable obstructions* (a different type of free relief is allowed under Rule 15.2a) or *boundary objects* or *integral objects* (no free relief is allowed).

16.1a When Relief Is Allowed

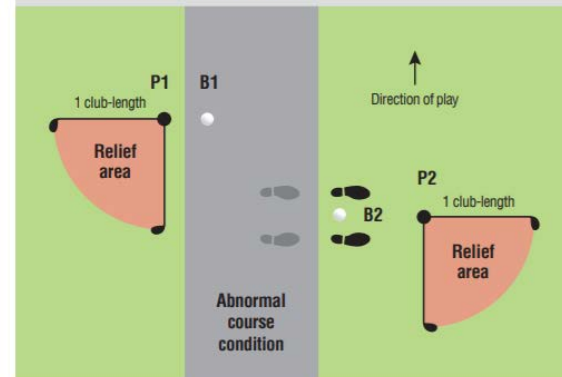
(1) **Meaning of Interference by Abnormal Course Condition.** Interference exists when any one of these is true:

- The player's ball touches or is in or on an *abnormal course condition*,
- An *abnormal course condition* physically interferes with the player's area of intended *stance* or area of intended *swing*, or
- Only when the ball is on the *putting green*, an *abnormal course condition* on or off the *putting green* intervenes on the *line of play*.

If the *abnormal course condition* is close enough to distract the player but does not meet any of these requirements, there is no interference under this Rule.

See **Committee Procedures, Section ___** (the *Committee* may adopt a *Local Rule* denying relief from an *abnormal course condition* that only interferes with the area of intended *stance*).

FIGURE 16.1: RELIEF FROM ABNORMAL COURSE CONDITIONS (INCLUDING IMMOVABLE OBSTRUCTIONS)



The diagram assumes the player is right-handed and the ball is in the general area. Relief is allowed for interference by an abnormal course condition (ACC), including an immovable obstruction, when the ball touches or lies in or on the condition (B1), or the condition interferes with the area of intended stance or swing (B2). The nearest point of complete relief for B1 is very close to the condition (P1). For B2, it is farther from the condition as the stance has to be clear of the ACC.



WORLD HANDICAPPING SYSTEM

A CONSISTENT MEASURE OF PLAYING ABILITY GLOBALLY

- Australia will adopt the World Handicapping System, with some components hoped to be introduced in the first half of 2019
- The two changes of note are:
 - Adjustment of Handicap in accordance with the difference between scratch rating and par
 - Introduction of a Soft Cap
 - Allowing the submission of scores digitally



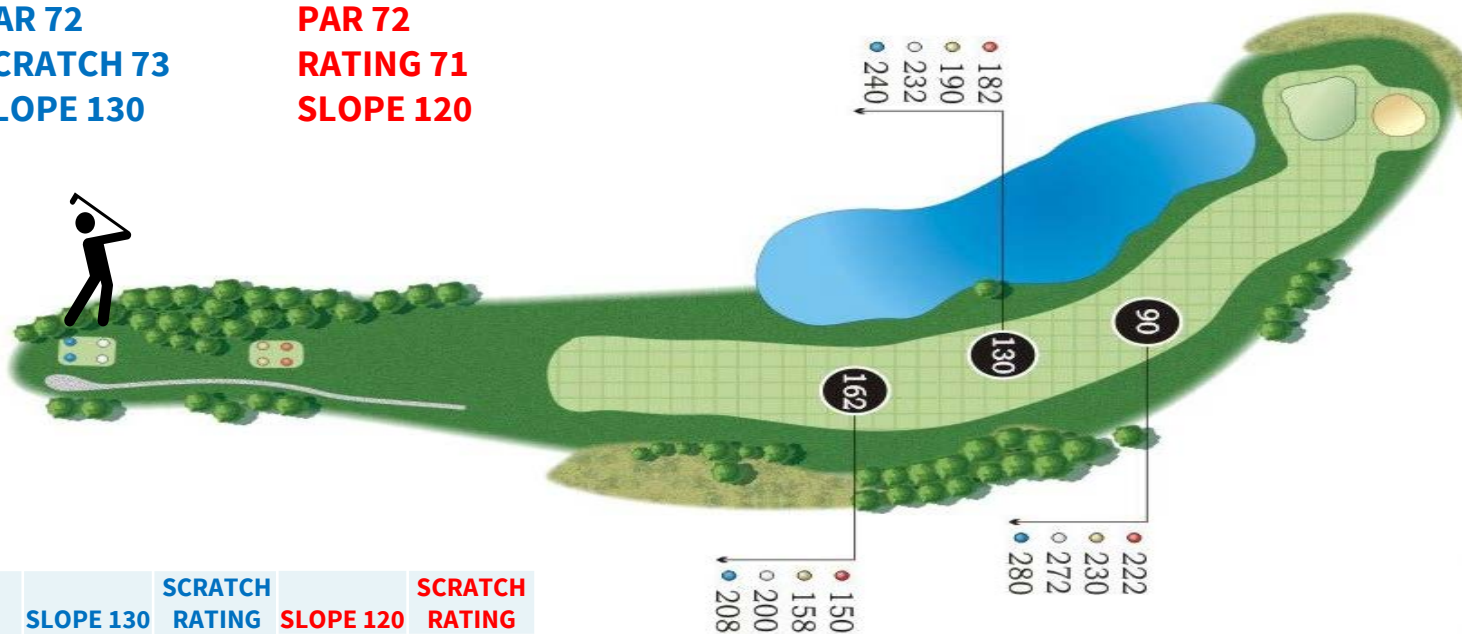


WORLD HANDICAPPING SYSTEM

ADJUSTMENT OF HANDICAP IN ACCORDANCE WITH THE DIFFERENCE BETWEEN SCRATCH RATING AND PAR

PAR 72
SCRATCH 73
SLOPE 130

PAR 72
RATING 71
SLOPE 120

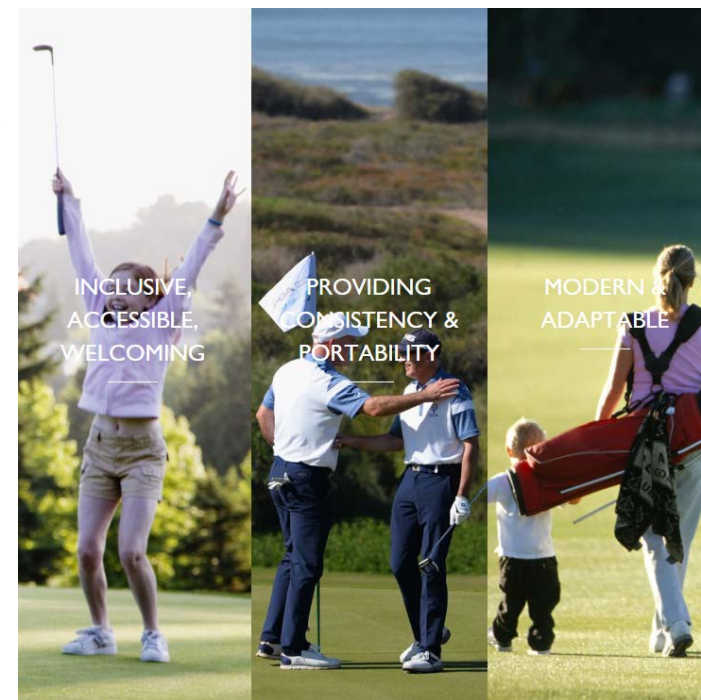


GA	SLOPE 130	SCRATCH RATING	SLOPE 120	SCRATCH RATING
0	0	1	0	+1
10	12	13	11	10
20	23	24	21	20
30	35	36	32	31



WORLD HANDICAPPING SYSTEM SOFT CAP AND HARD CAP

- Relates to the lowest handicap a golfer has had in the prior 12 months
- The Soft Cap will come into play at 3 above, and slow the rate of the handicap increase towards the maximum 'Hard Cap' of 5 (only 1.5% of golfers will reach this)





WORLD HANDICAPPING SYSTEM SOFT CAP AND HARD CAP

HANDICAP OVER TIME

